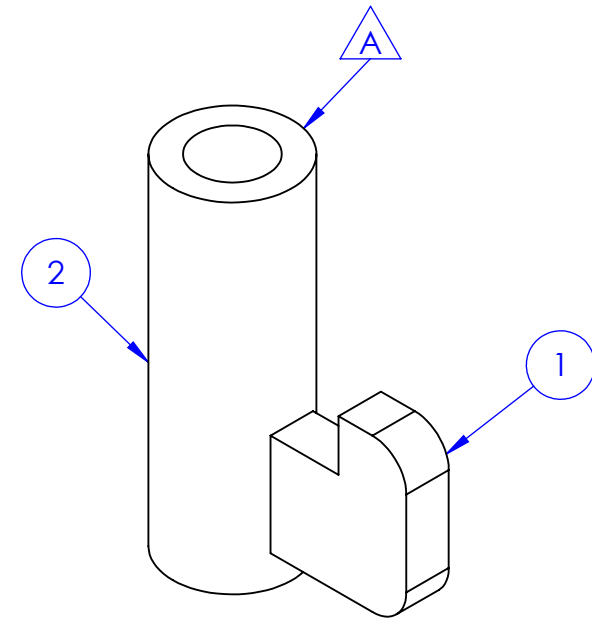
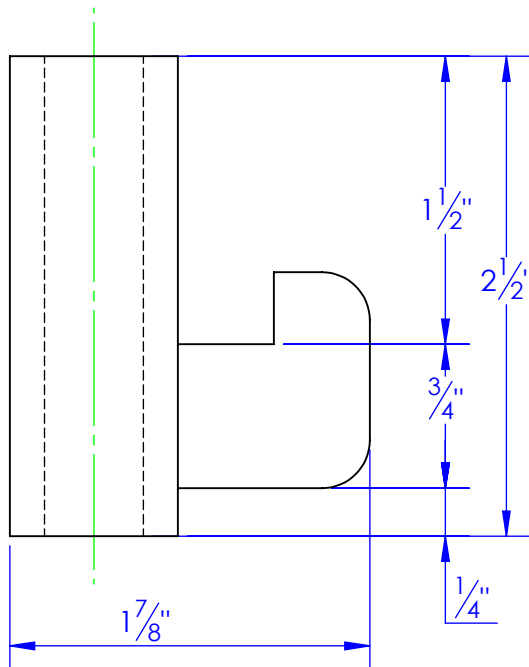
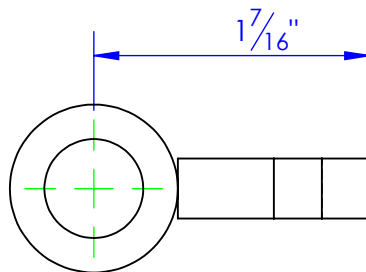


ITEM NO.	PART NUMBER	DESCRIPTION	MATERIAL	DRAWING #	QTY.
1	FP-HFL-701	MOUNTING HOOK	5/16"	40-2603	1
2	ST-MT .875 x .0531 L 2.5	LENGTH: 2-1/2"	CDBW 7/8" O.D x 0.531 I.D.	STOCK	1

REV.	REVISIONS	DATE	APPROVED
A	DESCRIPTION UPDATED TO NEW STANDARD DRAWING FROM # HFL-700	2/20/2012	



PROPRIETARY AND CONFIDENTIAL
THE INFORMATION CONTAINED IN THIS
DRAWING IS THE SOLE PROPERTY OF TRIPLE
C INC. ANY REPRODUCTION IN PART OR
AS A WHOLE WITHOUT THE WRITTEN
PERMISSION OF TRIPLE C INC. IS PROHIBITED.

DIMENSIONS ARE IN INCHES TOLERANCES: FRACTIONAL $\pm 1/16$ ANGULAR: MACH ± 1 BEND \pm TWO PLACE DECIMAL ± 010 THREE PLACE DECIMAL ± 005	
MATERIAL	--
DO NOT SCALE DRAWING	

NAME	DATE
DRAWN HEATH	6/5/2012
PART #	FP-HFL-700
ASM #	
COMMENTS:	
MOUNTING HOOK ASSEMBLY	

P.O. BOX 248, SABETHA, KS 66534		
TRIPLE C INC.		
SIZE A	DWG. NO. 40-1602	REV. A
SCALE: 1:1	WEIGHT: 0.36	SHEET 1 OF 1